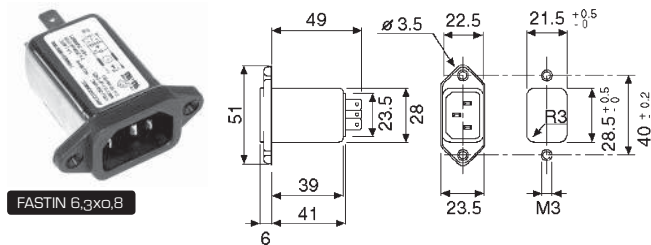


## RFI Filters 230VAC

A comprehensive range of chassis mount IEC 60320 inlet power entry modules housed in a compact and lightweight enclosure. Offers a low cost form of protection from mains borne interference in applications such as business, consumer, medical equipment, VDU's, computers, vending machines and many other general purpose applications.

- Current ratings from 1A to 10A
- Component value combinations to suit requirements
- Low cost design
- Medical versions available
- Metal case with built-in power line connector
- Temperature range: -25°C to +85°C

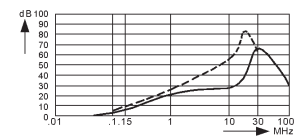
## F.BN Series



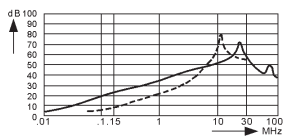
FASTIN 6,3x0,8

ARCOTRONICS

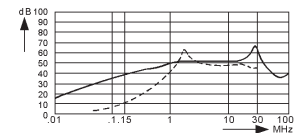
### FIL 2470



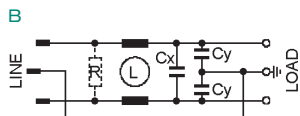
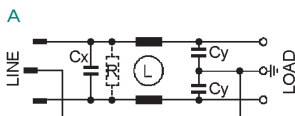
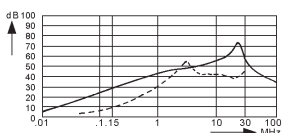
### FIL 2680-3



### FIL 3100-1



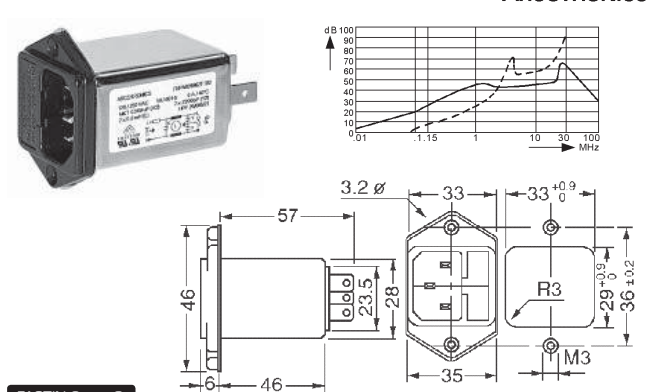
### FIL 3100-6



Part No.	Original mark.	Ir[A]	L[mH]	Cx[nF]	Cy[nF]	C.D.
FIL 2470	F.BN.AB.2470.ZG.110	10	2 x 0,13	47	2 x 2,5	A
FIL 2680-3	F.BN.AB.2680.ZD.000	3	2 x 2,5	68	2 x 2,5	A
FIL 3100-1	F.BN.AB.3100.BZ.000	1	2 x 10	100	2 x 2,5	B
FIL 3100-6	F.BN.AB.3100.FZ.000	6	2 x 1	100	2 x 2,5	B

Part No.	Ord.No.
S FIL2470	6903
S FIL2680-3	6904
S FIL3100-1	50184
S FIL3100-6	50185

## F.BP Series



FASTIN 6,3x0,8

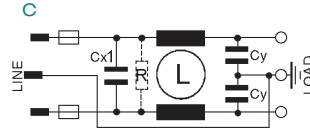
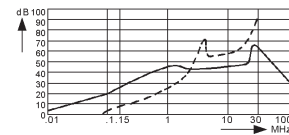
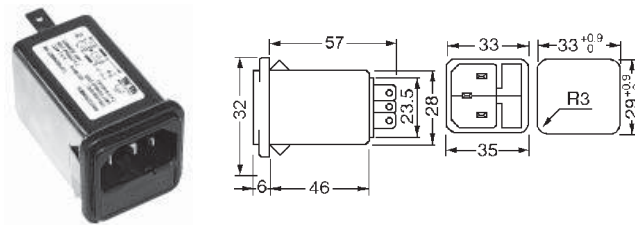
WITH FUSE HOLDERS 5x20

ARCOTRONICS

Part No.	Producer's mark	Ir[A]	L[mH]	Cx[nF]	Cy[nF]	C.D.
FIL 2680 BP	F.BP.AB.2680.ZF.100	6	2 x 0,8	68	2 x 2,2	C

Part No.	Ord.No.
S FIL2680BP	50186

## F.CP/F.CQ Series



FASTIN 6,3x0,8

WITH FUSE HOLDERS 5x20

Part No.	Producer's mark	Ir[A]	L[mH]	Cx[nF]	Cy[nF]	Sch.
FIL 2680 CP	F.CP.AB.2680.ZF.100	6	2 x 0,8	68	2 x 2,2	C
FIL 2680 CQ	F.CQ.AB.2680.ZF.100	6	2 x 0,8	68	2 x 2,2	C

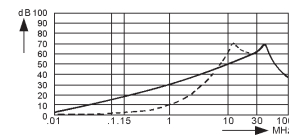
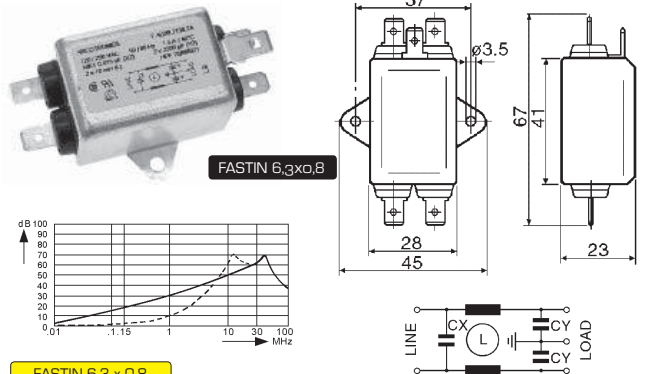
Part No.	Ord.No.
S FIL2680CP (1x držiak poistky)	50187
S FIL2680CQ (2x držiak poistky)	50188

## Chassis Mount Filters

Comprehensive family of single and multi-stage chassis mount filters. Throughout the power range, a high level of performance is provided within various sizes and styles of metal enclosure and termination options. Designed to provide economic solutions to a multitude of general purpose filtering requirements; industrial power equipment, office, business and medical equipments. The two stage FAS series is specifically designed to suppress RFI generated by switch mode power supply applications.

- Current ratings from 0.5A to 40A
- High symmetric and asymmetric attenuation
- Earth line choke and medical versions available
- Custom designs to client specifications
- Connections: faston 6.3 x 0.8mm (≤16A)
- Rated voltage (VR): max 250V, 50/60Hz
- Rated current (IR): referred to room temperature = 40°C
- Leakage current (IL): at 220V, 50Hz, max value
- Voltage test (2S.): line to ground 3000Vdc or 1800Vac line to line 1700Vdc
- Temperature range: -25°C to +85°C

## F.AI Series



FASTIN 6,3 x 0,8

Part No.	Producer's mark	Ir[A]	L[mH]	Cx[μF]	Cy[pF]
FIL 2150	F.AI.DB.2150.ZA.000	1,5	2 x 10	0,015	2 x 2200
FIL 2150-3	F.AI.DB.2150.ZC.000	3	2 x 2,0	0,015	2 x 2200
FIL 2150-6,5	F.AI.DB.3100.ZD.000	6,5	2 x 1,0	0,015	2 x 2200

Part No.	Ord.No.
S FIL2150	50189
S FIL2150-3	50190
S FIL2150-6,5	50191