

## Overview of Power Entry Modules with Line Filter

Passive Components

5145



EC12



EF12

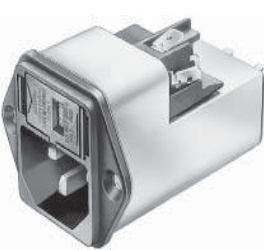


GRF



Technical parameters	5145	EC12	EF12	GRF
Max. current/voltage	10A/250V AC	16A/250V AC	10A/250V AC	10A/250V AC
Breakdown voltage L-N, L/N-PE	1,7kVAC, 2,7kVAC	1,7kVAC, 2,7kVAC	1,7kVAC, 2,7kVAC	1,7kVAC, 2,7kVAC
Type of terminals	FASTIN 6,3x0,8 mm	FASTIN 6,3x0,8 mm	FASTIN 6,3x0,8 mm	FASTIN 6,3x0,8 mm
Line switch	2-pole	2-pole	2-pole	-
Operating temperature range	-10°C up to 55°C	-25°C up to 85°C	-10°C up to 55°C	-25°C up to 85°C
Front panel protection	IP40	IP40	IP40	IP40
Mounting hole dimensions	29x72 mm	33,9x48 mm	33,9x81 mm	30,5x20,8 mm

KFA



KFC



CE



5200; 5220



Technical parameters	KFA	KFC	CE	5200; 5220
Max. current/voltage	10A/250V AC	10A/250V AC	10A/250V AC	10A/250V AC
Breakdown voltage L-N, L/N-PE	1,7kVAC, 2,7kVAC	1,7kVAC, 2,7kVAC	1,7kVAC, 2,7kVAC	1,7kVAC, 2,7kVAC
Type of terminals	FASTIN 6,3x0,8 mm	FASTIN 4,8x0,8 mm	FASTIN 4,8x0,8 mm	FASTIN 6,3x0,8 mm
Operating temperature range	-25°C up to 85°C	-25°C up to 85°C	-25°C up to 85°C	-25°C up to 85°C
Front panel protection	IP40	IP40	IP40	IP40
Mounting hole dimensions	33x36 mm	28,5x42 mm	28,5x53,5 mm	29x32 mm

5110



KFS; KFX

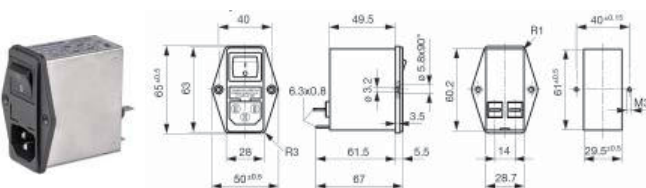


C20F



Technical parameters	5110	KFS; KFX	C20F
Max. current/voltage	10A/250V AC	10A/250V AC	16A/250V AC
Breakdown voltage L-N, L/N-PE	1,7kVAC, 2,7kVAC	4kVAC, 5kVAC (KFX)	1,7kVAC, 2,7kVAC
Type of terminals	FASTIN 6,3x0,8 mm	FASTIN 6,3x0,8 mm	FASTIN 6,3x0,8 mm
Operating temperature range	-25°C up to 85°C	-25°C up to 85°C	-25°C up to 85°C
Front panel protection	IP40	IP40	IP40
Mounting hole dimensions	29x21 mm	21,5x28,5 mm	26,8x34,8 mm

### FKH, FKI Series



1-stage inlet filter, front side mounting, line switch 2-pole, fuseholder 5x20 mm 1-pole.

**Description:**

- Panel Mount - screw-on from front side
- 4 Functions:
  1. Appliance Inlet Protection class I,
  2. Line switch 2-pole,
  3. Fuseholder for fuse-links 5 x 20 mm 1-pole,
  4. Line-filter in standard version.
- Quick connect terminals 6.3 x 0.8 mm
- Medical version M80 on request

Part No.	Prod. mark	I <sub>r</sub> [A]	L[mH]	C <sub>x</sub> [nF]	C <sub>y</sub> [nF]	Poistka
FKH2-50-6/I-A	4304.4044	6	2x0,8	68	2,2	1
FKI2-50-6/I-A	4304.4064	6	2x0,8	68	2,2	2

Part No.	Ord.No.
S FKH2-50-6/I-A	699999
S FKI2-50-6/I-A	699998