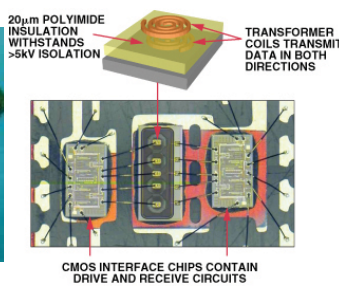
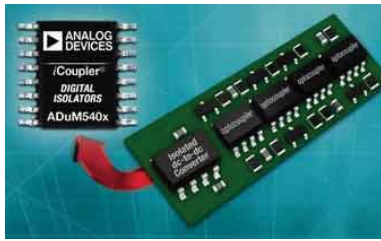


iCoupler Technology



Analog Devices has recently addressed this issue with the introduction of a complete and fully integrated isolation solution involving signal and power transfer across an isolation barrier using microtransformers. This extension to our iCoupler technology, termed isoPower, is a breakthrough alternative. Signal and power within a single component eliminates the need for a bulky, expensive, difficult to design isolated power supply and provides adequate isolation up to 5 kV. It can significantly reduce the total isolation system cost, the board space, and design time. A 2-channel iCoupler device with isoPower is almost 90% smaller and 70% less expensive.

Part No.	Ord. No.	Description
S ADuM 1201 ARZ	56891	IC 2ch Digital Isolator 150ns SO8
O ADuM 1201 BRZ	61083	IC 2ch Digital Isolator 50ns SO8
O ADuM 1301 ARWZ	59607	IC 3ch Digital Isolator SO16
O ADuM 1310 BRWZ	62696	IC 3ch Digital Isolator SO16
O ADuM 1311 ARWZ	62697	IC 3ch Digital Isolator SO16
O ADuM 1400 ARWZ	67540	Digital Isolator 4-channel SO16
O ADuM 1401 ARWZ	59608	IC 4ch Digital Isolator SO16
O ADuM 1402 ARWZ	57789	IC 4ch Digital Isolator SO16
O ADuM 1402 BRWZ	63410	IC 4ch Digital Isolator SO16
S ADuM 1410 ARWZ	62698	IC 4ch Digital Isolator SO16
S ADuM 1412 ARWZ	60968	IC 4ch Digital Isolator SO16
O ADuM 2402 ARWZ	60969	IC 4ch Digital Isolator SO16

Peripherals ICs, I²C BUS

Part No.	Ord. No.	Description
S 16 C 550 CFN	5748	UART & FIFO PLCC 44
O FM 3104-S	48386	Processor companion +FRAM 4Kb SOIC14
O FM 3116-S	48387	Processor companion +FRAM 16Kb SOIC14
O FM 31256-G	48390	Processor companion +FRAM 256Kb SOIC14
O FM 3164-G	48389	Processor companion +FRAM 64Kb SOIC14
S PCA 82 C 250	40249	CAN Transceiver DIP8
S PCA 82 C 250 T SMD	33945	Driver CAN BUS/receiver SO8
S PCF 8574 AP(N)	27368	8-bit I/O port Expander I2C DIP16
S PCF 8574 AT SMD	27357	8-bit I/O port Expander I2C SO16
S PCF 8574 P	23581	8-bit I/O port Expander I2C DIP16
S PCF 8574 T SMD	24794	8-bit I/O port Expander I2C SO16
S PCF 8583 P	23582	I2C clock/calendar SRAM 256x8 DIP8
S PCF 8583 T SMD	24796	I2C clock/calendar SRAM 256x8 SO8(7,5mm)
S PCF 8584 P	36436	I2C BUS controller DIP20