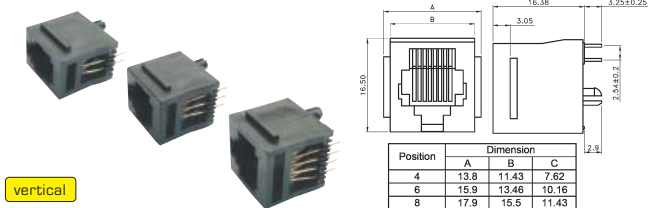


Modular PCB Sockets

7006

Modular-Jack, vertical (perpendicular) insertion into PCB, 4P4C, 6P6C, 8P8C series available



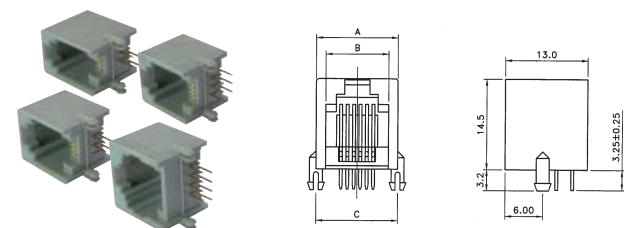
vertical

Part No.	Description
7006-4P4C	4P4C vertical, 13,8x16,38x16,5mm RM7,62
7006-6P6C	6P6C vertical, 15,46x16,38x16,5mm RM10,16
7006-8P8C	8P8C vertical, 17,9x16,38x16,5mm RM11,43

Part No.	Ord.No.
S 7006-4P4C	55946
S 7006-6P6C	55947
S 7006-8P8C	55948

7007

Modular-Jack unshielded, horizontal insertion to PCB, 4P4C, 6P4C, 6P6C, 8P8C versions available.



Part No.	Description
7007-4P4C	4P4C 10x14,5x13mm RM10
7007-6P4C	6P4C 12,2x14,5x13mm RM12
7007-6P6C	6P6C 12,2x14,5x13mm RM12
7007-8P8C	8P8C 15x14,5x13mm RM15

Part No.	Ord.No.
S 7007-4P4C	48742
S 7007-6P4C	48744
S 7007-6P6C	48745
S 7007-8P8C	48746

TZB 46x

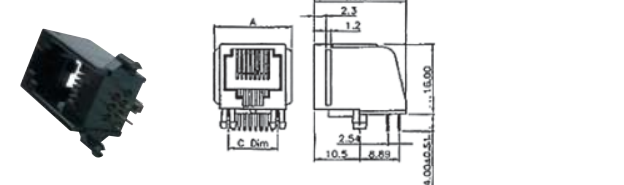
Modular-Jack for horizontal PCB mounting, with guiding pins. 4P4C, 6P4C, 6P6C versions available.



Part No.	Ord.No.	Description
S TZB 460	29057	PCB mounting 4P4C
S TZB 461	29058	PCB mounting 6P4C
S TZB 462	29059	PCB mounting 6P6C

TZB 463

Modular-Jack for horizontal PCB mounting, 8P8C type available in black or grey colour.



Part No.	Ord.No.
S TZB 463 BK	29060
TZB 463 GY	42725

TZB 453

Modular-Jack 8/8 with approx. 15 cm long connecting wires, panel mounting

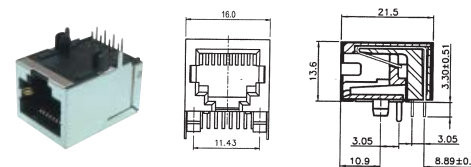


Part No.	Ord.No.
S TZB 453	29056

A-20042-LP/FS

Modular-Jack 8/8 shielded with gold plated contacts, L21,5mm

ASSMANN



Part No.	Ord.No.
S A-2004-2-LP/FS	47771

We also supply jacks with leds as well as multiport jacks on offer.



Industrial RJ45 Connectors

ASSMANN

Designed for wet and aggressive industrial environment. They are characterized by high protection class - IP67.

A-RJ45M-LR

Modular plug RJ45M IP67, cable mounting, long sealing nut

A-RJ45M-SR

Modular plug RJ45M IP67, cable mounting, short sealing nut



Part No.	Ord.No.
S A-RJ45M-LR	69340
S A-RJ45M-SR	69341

A-RJ45 DFR

Modular Jack, 8-contacts, IP67, shielded, flange, panel mount.

A-RJ45 GFS

Modular Jack IP67 panel mount., rear RJ45, shielded, flange.

A-WP-COVER 1

Cover with chain for panel RJ45 IP67, 9cm long chain



Part No.	Ord.No.
S A-RJ45 DFR	69337
S A-RJ45 GFS	69338
S A-WP-COVER 1	69339