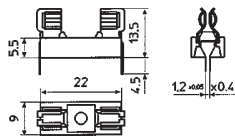


SI-HA 112000 (PTF15)

For 5x20 fuses, RM=22,5mm, max. 6,3A, 250V.

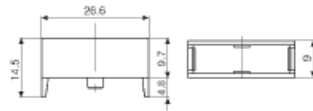


Part No.	Ord. No.
S SI-HA 112000	16934

SI-HA 112100 LC

Plastic cover for SI-HA 112000.

ECONOMIC

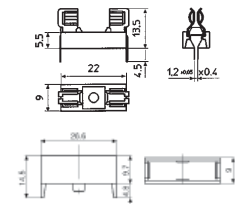


Part No.	Ord. No.
S SI-HA 112100 LC	3759

SI-HA 112000 + 112100 LC

Fuseholder with cover for 5x20 fuses, RM=22,5mm, max. 6,3A, 250V.

ECONOMIC

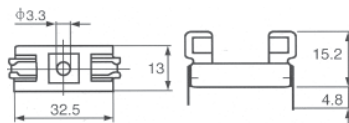
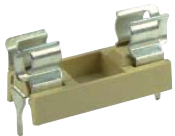


Part No.	Ord. No.
S SI-HA 112000 + 112100 LC	56928

SI-HA 137500

For 6,3x32 fuses, PCB mounting, RM=32,5mm, max. 6,3A, 250V.

ECONOMIC



Part No.	Ord. No.
S SI-HA 137500	23702

SI-HA 178000 (PTF78)

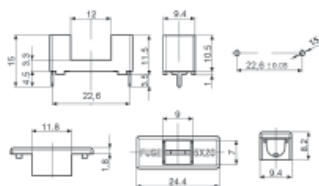
Fuseholder with cover, green colour, for 5x20 fuses, max. 6,3A,250V, 10MOhm, M22,6mm.



ECONOMIC

SI-HA 178000 LC

Fuseholder with cover, grey colour, for 5x20 fuses, max. 6,3A,250V, 10MOhm, M22,6mm.



Part No.	Ord. No.	Color
S SI-HA 178000 (PTF78)	2738	green
S SI-HA 178000 LC	56938	grey

SI-CLIP A

For 5x20 fuses, RM=5mm, max. 10A, material: silver plated brass.



Part No.	Ord. No.
S SI-CLIP A	18628

SI-CLIP B

For 5x20 fuses, RM=5mm, max. 10A, material: silver plated brass.



Part No.	Ord. No.
S SI-CLIP B	16939

SI-HA FH15

Fuseholder for automotive fuses, max. 15A, wire 20cm black.



SI-HA FH20

Fuseholder for automotive fuses, max. 20A, wire 20cm yellow.



SI-HA FH30

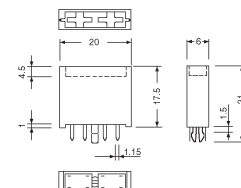
Fuseholder for automotive fuses, max. 30A, wire 20cm green.



Part No.	Ord. No.
S SI-HA FH15	50487
S SI-HA FH20	50488
S SI-HA FH30	50489

SI-HA FKS

Fuseholder for automotive fuses, max. 20A, 32V, 8-pins (4pins/contact), WxHxD=20x17,5x6mm.



Part No.	Ord. No.
S SI-HA FKS	34062